


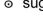


# Black Lake loop

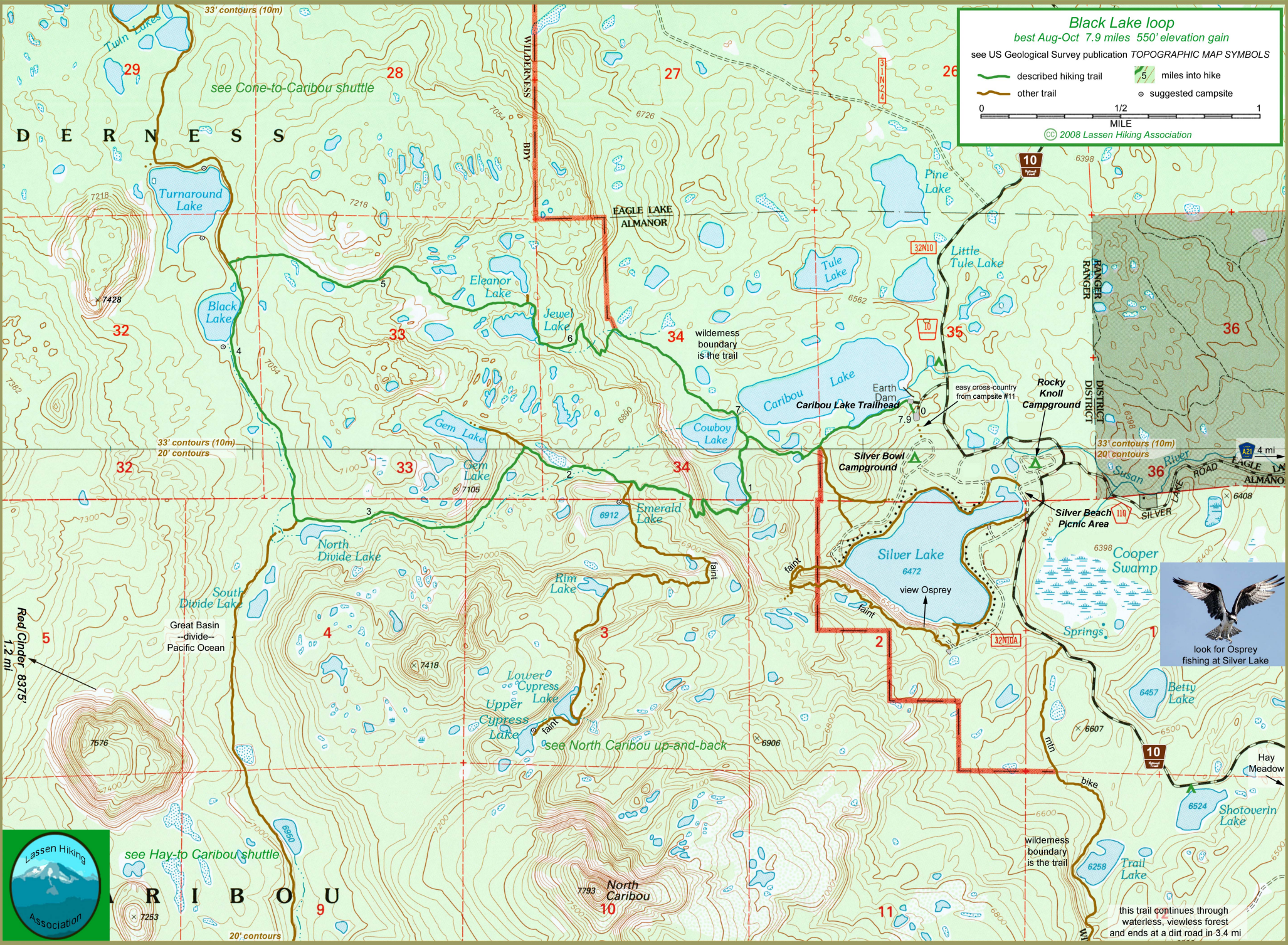
best Aug-Oct 7.9 miles 550' elevation gain

see US Geological Survey publication TOPOGRAPHIC MAP SYMBOLS

-  described hiking trail
-  other trail
-  5 miles into hike
-  suggested campsite



© 2008 Lassen Hiking Association



D E R N E S S

Red Cinder 8375'  
1.2 mi



R I B O U



look for Osprey fishing at Silver Lake

this trail continues through waterless, viewless forest and ends at a dirt road in 3.4 mi