

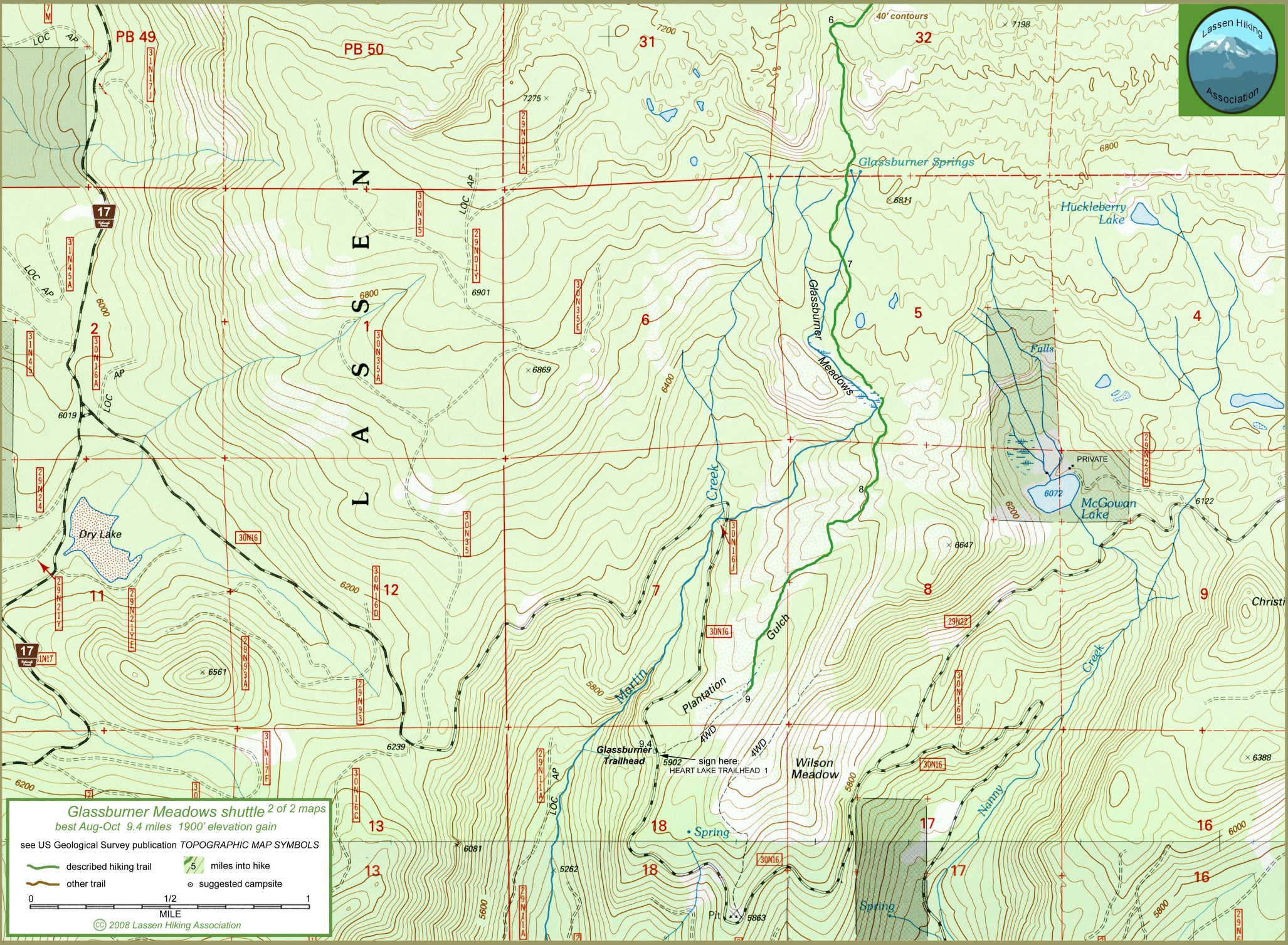
**Glassburner Meadows shuttle** 1 of 2 maps  
 best Aug-Oct 9.4 miles 1900' elevation gain  
 see US Geological Survey publication **TOPOGRAPHIC MAP SYMBOLS**

- described hiking trail
- other trail
- 5 miles into hike
- suggested campsite

0 1/2 1  
 MILE

© 2008 Lassen Hiking Association





**Glassburner Meadows shuttle** 2 of 2 maps  
best Aug-Oct 9.4 miles 1900' elevation gain  
see US Geological Survey publication **TOPOGRAPHIC MAP SYMBOLS**

- described hiking trail
- other trail
- 5 miles into hike
- suggested campsite

0 1/2 1  
MILE

© 2008 Lassen Hiking Association