




# Rice Creek up-and-back

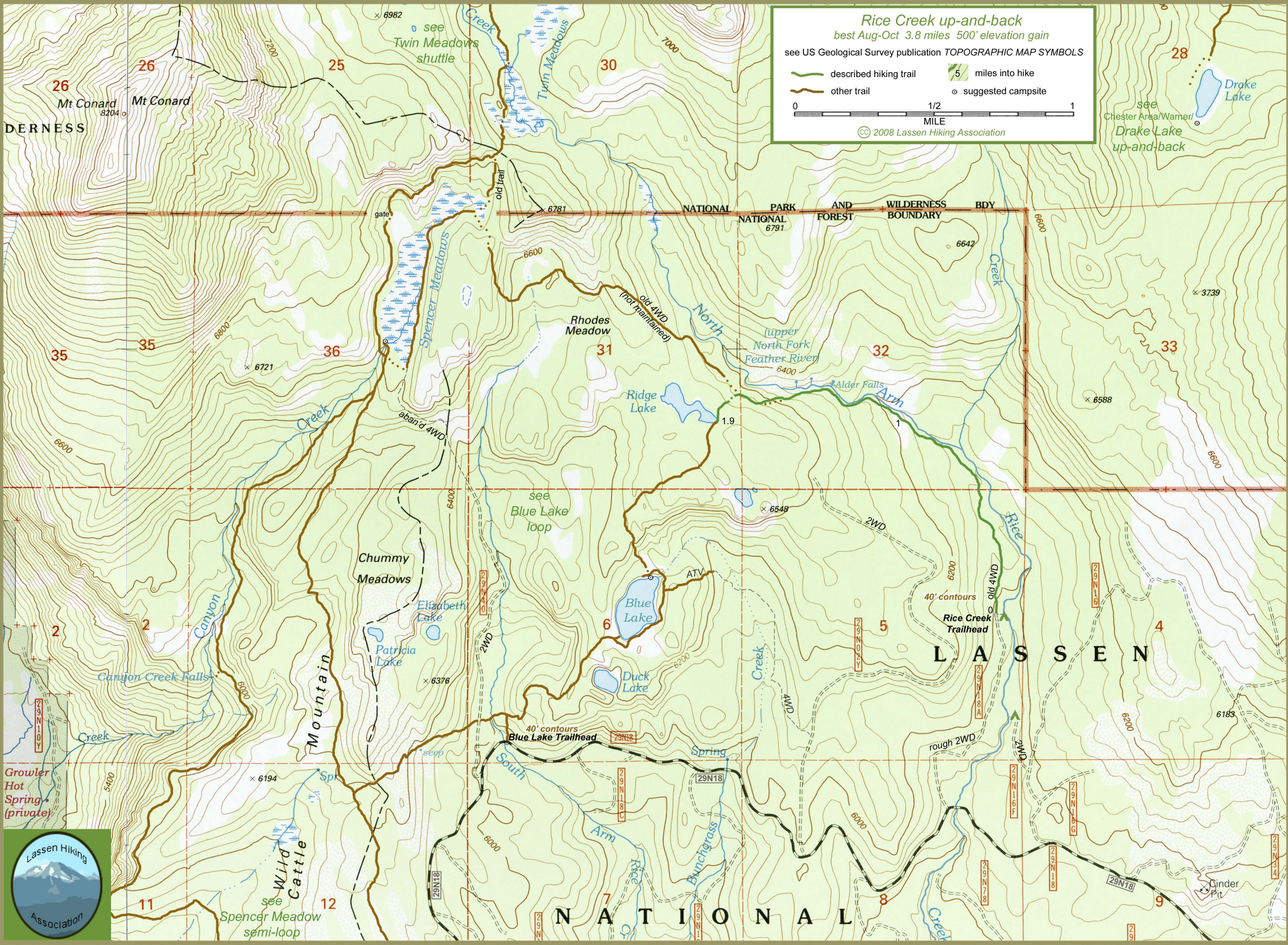
best Aug-Oct 3.8 miles 500' elevation gain

see US Geological Survey publication TOPOGRAPHIC MAP SYMBOLS

-  described hiking trail
-  other trail
-  5 miles into hike
-  suggested campsite



© 2008 Lassen Hiking Association



see Chester Area/Wamer/Drake Lake up-and-back